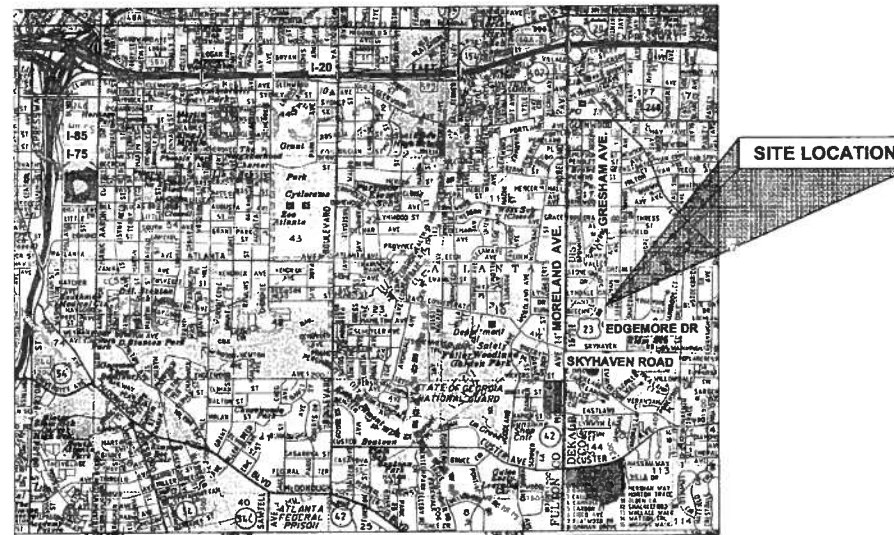


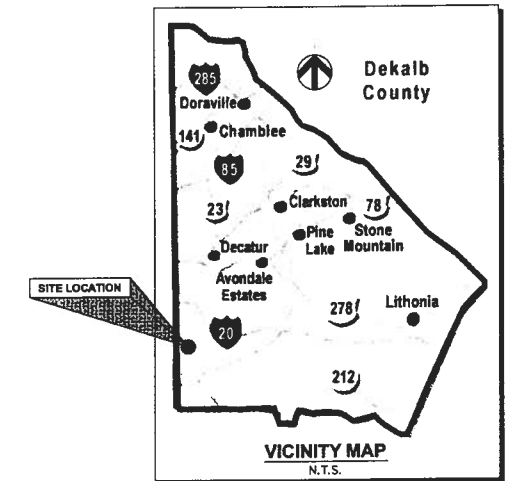
# GRESHAM AVENUE SANITARY SEWER REHABILITATION

DISTRICT 15 LANDLOT: 145  
AP# 15693

TOTAL SITE AREA = .95 ACRES  
DISTURBED AREA = .95 ACRES



**LOCATION MAP**  
N.T.S.



## INDEX OF SHEETS

### GENERAL

- 00G-101 COVER SHEET
- 00G-102 GENERAL NOTES & LEGEND

### CIVIL

- 00C-200 EROSION & SEDIMENT CONTROL PLAN
- 00C-201 EROSION & SEDIMENT CONTROL PLAN
- 00C-202 EROSION CONTROL NPDES NOTES
- 00C-203 EROSION CONTROL NPDES NOTES
- 00C-203A EROSION CONTROL NPDES NOTES
- 00C-204 EROSION CONTROL DETAILS
- 00C-205 EROSION CONTROL DETAILS
- 00C-301 SANITARY SEWER SOUTH PLAN & PROFILE
- 00C-302 SANITARY SEWER NORTH PLAN & PROFILE
- 00C-303 TREE REMOVAL / PROTECTION PLAN

### OWNER / DEVELOPER:

DEKALB COUNTY DEPARTMENT OF  
WATERSHED MANAGEMENT  
1580 ROADHAVEN DRIVE  
STONE MOUNTAIN, GA 30083  
770-621-7200

### ENGINEER:



**HDR Engineering, Inc.**  
ONE COMPANY | Many Solutions  
301 Perimeter Center North - Suite 400 | Atlanta, GA | 30346-2402  
Phone: 678-775-4800 | Fax: 678-775-4848

### NARRATIVE

THE SITE IS WITHIN DEKALB COUNTY, GEORGIA. THE SITE CONSISTS OF 0.95 ACRES DISTURBED AREA. THE PROPOSED DEVELOPMENT ENTAILS REHABILITATION OF EXISTING 15 INCH VCP WITH A NEW 14 INCH CURED IN PLACE PIPE.

### UTILITY DISCLAIMER NOTE:

ALL KNOWN UTILITIES HAVE BEEN SHOWN SCHEMATICALLY ON THE PLANS AND MAY NOT BE SHOWN ACCURATELY HORIZONTALLY OR VERTICALLY. UTILITIES MAY EXIST WHICH ARE NOT SHOWN ON THE PLANS. CONTRACTOR SHALL BE RESPONSIBLE FOR CONTACTING ALL UTILITY COMPANIES HAVING UTILITIES WITHIN OR ADJACENT TO THE WORK AREA. CONTRACTOR SHALL HAVE THE UTILITIES FIELD LOCATED AND COORDINATE WITH UTILITY COMPANIES TO HAVE THEM RELOCATED AND ADAPTED FOR TIE-INS.

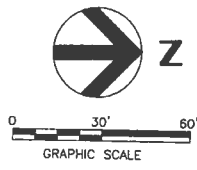
### ENGINEER'S CERTIFICATION STATEMENT:

With my initials at the line above and my seal and signature below, I, a professional Engineer, Architect or Landscape Architect licensed in the State of Georgia, hereby certify that I have personally reviewed the attached submittal plans for a land disturbance permit. In my opinion these submittal plans meet all applicable regulations and ordinances of DeKalb County. DeKalb County and other affected parties may rely on this certification.

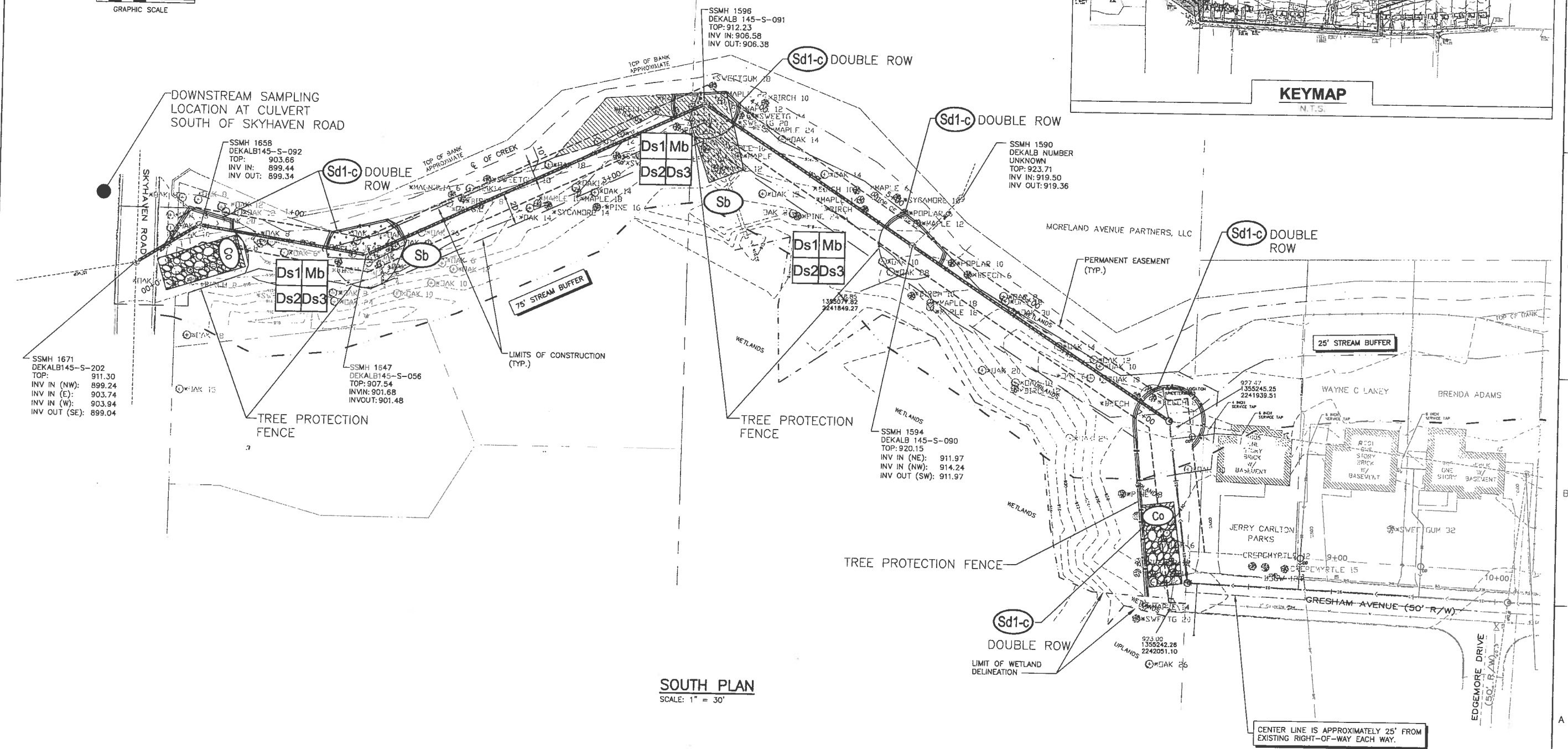
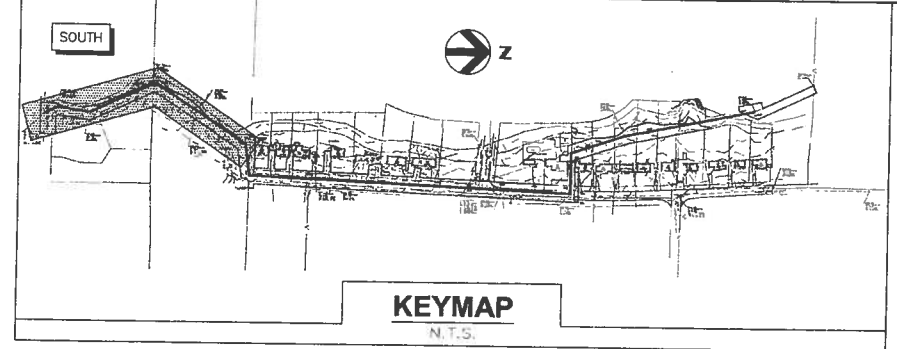
Signed: L Russell Pennington Georgia Registration #                      No. 31749  
L Russell Pennington, P.E.

Date: 4/14/05





NOTE:  
1. LIMITS OF CONSTRUCTION VARIES AS SHOWN.  
CONTRACTOR TO ENSURE NO DISTURBANCE BEYOND  
PERMITTED WORK ZONE.



**SOUTH PLAN**  
SCALE: 1" = 30'

NOTE:  
RUSS PENNINGTON  
GA SWCC NO. 40311 EXP: 03/22/2010



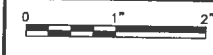
ISSUE	DATE	DESCRIPTION
D	04/02/09	PER COUNTY REVIEW COMMENTS
C	11/26/08	ISSUED FOR CONSTRUCTION
B	11/14/08	90% REVIEW PACKAGE
A	10/24/08	60% REVIEW PACKAGE

PROJECT MANAGER	R. PENNINGTON, PE
PROJECT ENGINEER	X. ZHU, PE
DRAWN BY:	J. FINNEY
CHECKED BY:	S. SHEETS, PE
PROJECT NUMBER	91022

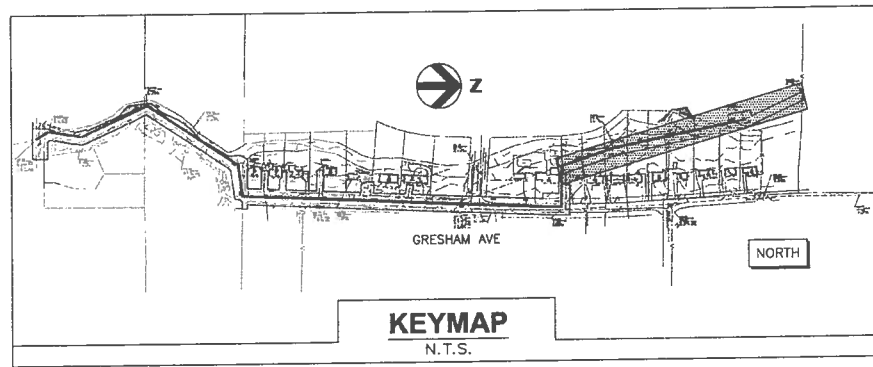


**GRESHAM AVENUE  
SANITARY SEWER  
REHABILITATION**  
DEKALB COUNTY, GEORGIA

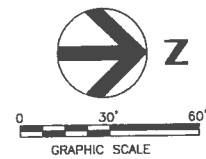
**EROSION & SEDIMENT CONTROL PLAN**



FILENAME	00C-200.dwg	SHEET	
SCALE	HORZ 1" = 30'		<b>00C-200</b>



NOTE:  
1. LIMITS OF CONSTRUCTION VARIES AS SHOWN.  
CONTRACTOR TO ENSURE NO DISTURBANCE BEYOND PERMITTED WORK ZONE.



SSMH 1771  
DEKALB145-S-089  
TOP: 933.12  
INVIN: 927.11  
INVOUT: 926.92

SSMH 1681  
DEKALB145-S-006  
TOP: 939.13  
INV: 931.50

TREE PROTECTION FENCE

PERMANENT EASEMENT (TYP.)  
Ds1Mb  
Ds2Ds4

SSMH 1684  
DEKALB145-S-005  
TOP: 937.64  
INV IN: 930.14  
INV OUT: 929.99

Sd1-c DOUBLE ROW TREE PROTECTION FENCE

TOTAL TEMP. CONST. EASE. 349 SQ FT 0.0080 ACRES

TOTAL TEMP. CONST. EASE. 1,215 SQ FT 0.0279 ACRES

Ds1Mb  
Ds2Ds4

TREE PROTECTION FENCE

PERM. EASEMENT 1,401 SQ FT 0.0322 ACRES

NANCY J. WEBB

LAVONIA WILSON

AUBREY A. CLARK

ROBERT V. WIEHAN

ANNA LEE BURNS

WILLIAM F. FLEMING

MELISSA J. BEVIS

Sd1-c DOUBLE ROW

25' STREAM BUFFER

75' STREAM BUFFER

UPSTREAM SAMPLING LOCATION AT CULVERT UNDER STONY BROOK ROAD

SSMH 1003  
DEKALB145-S-041  
TOP: 942.35  
INV IN: 933.75  
INV OUT: 933.60

PERM. EASEMENT 1,632 SQ FT 0.0375 ACRES

SSMH 1218  
DEKALB145-S-043  
TOP: 936.62  
INVIN: 927.57  
INVOUT: 927.37

SSMH 1091  
DEKALB145-S-042  
TOP: 939.67  
INV IN (N): 930.79  
INV IN (E): 930.47  
INV OUT (S): 930.39

CENTER LINE IS APPROXIMATELY 25' FROM EXISTING RIGHT-OF-WAY EACH WAY.

NORTH PLAN  
SCALE: 1" = 30'

NOTE:  
RUSS PENNINGTON  
GA SWCC NO. 40311 EXP: 03/22/2010



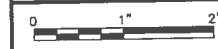
ISSUE	DATE	DESCRIPTION
D	04/02/09	PER COUNTY REVIEW COMMENTS
C	11/26/08	ISSUED FOR CONSTRUCTION
B	11/14/08	90% REVIEW PACKAGE
A	10/24/08	60% REVIEW PACKAGE

PROJECT MANAGER	R. PENNINGTON, PE
PROJECT ENGINEER	X. ZHU, PE
DRAWN BY:	J. FINNEY
CHECKED BY:	S. SHEETS, PE
PROJECT NUMBER	91022



GRESHAM AVENUE  
SANITARY SEWER  
REHABILITATION  
DEKALB COUNTY, GEORGIA

EROSION & SEDIMENT CONTROL PLAN



FILENAME: OOC-201.dwg  
SCALE: HORZ 1" = 30'

SHEET  
OOC-201